

# LABEL MATRIX

## BARCODE LABEL DESIGN SOFTWARE from TEKLYNX

LABEL MATRIX is a feature-rich label design application for low-complexity labeling environments. Featuring an easy-to-navigate interface, helpful wizards, and intuitive features, LABEL MATRIX is an easy-to-use label design solution.

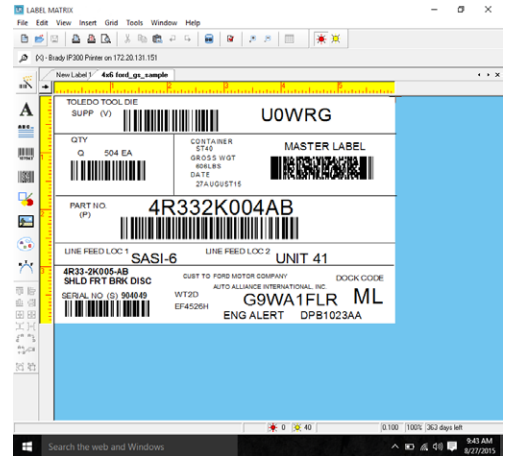


# LABEL MATRIX

LABEL MATRIX is feature-rich label design software for smaller companies looking for a trusted solution that is simple to install and easy to use. LABEL MATRIX is an intuitive application with an easy-to-navigate interface. Helpful wizards guide you through adding text, images, and barcodes, connecting to a database, and advanced design options to ensure a straightforward process. LABEL MATRIX is the best choice for small businesses looking for a labeling solution at a reasonable price point!

TEKLYNX Subscription Licensing is available for LABEL MATRIX. Subscription Licensing is the best option for maximum flexibility and long term value. The upfront cost of a LABEL MATRIX subscription license is lower, and it includes more value than ever before.

- Get upgrades on time, without spending extra time or money.
- Easily predict software costs for simplified and predictable budgeting.
- Take advantage of unlimited access to software maintenance and technical support.



## FEATURES

LABEL MATRIX is packed with the features you need to meet low-complexity label design needs.

- **Wizards** - LABEL MATRIX' wizards can act as training guides when new users begin using the application.
- **2D Barcodes** - Support for 100+ barcode symbologies, including Data Matrix and QR Codes.
- **Counters** - Easily add serialization and incrementing values to your labels.
- **Date Offsets** - Adjust the current date by a certain interval (often used for best-by and expiration dates.)



## BENEFITS

How can LABEL MATRIX help your company?

- **Save time on training** - Use LABEL MATRIX' helpful wizards to cut down on training time. Wizards are available for everything from selecting a printer, to database setup, to 2D barcode configuration.
- **Fast Track Labeling** - LABEL MATRIX includes hundreds of label samples and templates, spanning from address labels to industry regulation labels. These samples and templates allow users to meet virtually any labeling requirements quickly and easily.
- **Scale Your Business** - LABEL MATRIX is designed to meet the needs of small labeling environments, but powerful enough to handle large labeling projects. When it's time to move up to a more robust solution, LABEL MATRIX label files are easily convertible to LABELVIEW files.

## HOW TO BUY

TEKLYNX sells its label design software through a network of Value-Added Technology Resellers.

1. Download a demo from [teklynx.com/labelmatrix](http://teklynx.com/labelmatrix), and try out the software for 30 days.
2. TEKLYNX contacts you to discuss your labeling needs and ensure you know which label design solution is right for your company.
3. TEKLYNX puts you in touch with a Value-Added Reseller in your area.
4. Purchase the software through the Reseller.



[www.teklynx.com/labelmatrix](http://www.teklynx.com/labelmatrix)

# EDITION COMPARISON

Which edition of LABEL MATRIX is right for your labeling needs?

LABEL MATRIX QuickDraw is a basic label design package recommended for printing linear barcodes to Inkjet or LaserJet printers using store-bought sheets of labels, such as Avery forms and templates.

LABEL MATRIX PowerPro has the ability to print linear and 2D barcode labels to thermal and thermal transfer printers. LABEL MATRIX PowerPro is available in network (multi-user) licensing.

Note: To run LABEL MATRIX on a virtual machine, a VM license must be purchased.

Visit [www.teklynx.com/labelmatrix](http://www.teklynx.com/labelmatrix) for more information.



LABEL MATRIX Feature	QuickDraw	PowerPro
Virtual machine product available (tested and supported on virtual machines)	x	x
Network version available		x
Print-only version available		x
Keyless software activation	x	x
Linear barcode support	x	x
2D barcode support (including Data Matrix, QR Code, and TLC39)		x
UCC/EAN 128 and MaxiCode wizards		x
Live Print Preview (view multiple labels with live variable data displayed)		x
Label specific security		x
Over 100 compliance label templates included		x
Label background templates with round label formats	x	x
Automatic paragraph sizing & scale to fit		x
Bulleted & numbered lists with hanging indents		x
Graphic formats import (bmp, pcx, jpg, tif, etc.)	x	x
Keyboard entry at print time	x	x
Counters (serial numbers) with support for alpha/numeric	x	x
Counters with custom numbering		x
Advanced math, string, and logical functions		x
Configure an ODBC/OLE DB data source		x
Data Grid for viewing database records	x	x
Command line support		x
View & customize reports generated from label log files (Log Viewer)		x

# Is LABEL MATRIX your solution?

LABEL MATRIX is ideal for low complexity labeling environments.

Companies who use LABEL MATRIX want a basic interface that is easy to learn, and do not require database integration because they are creating text-based labels that primarily include fixed information. LABEL MATRIX provides a simple, yet robust, solution for companies looking for an entry-level barcode labeling solution at a reasonable price point.

Companies who use LABEL MATRIX typically have:

- 3 or fewer printers
- Minimal user input
- Fixed data
- Simple labeling needs: click and print
- Limited need for database integration
- Static labeling environment
- Office or laser jet printers connected to desktop print stations

Download a **FREE**  
30-day trial of  
**LABEL MATRIX** at:  
[www.teklynx.com/labelmatrix](http://www.teklynx.com/labelmatrix)

# TEKLYNX Offers Solutions for All Levels of Labeling Complexity

## LABEL MATRIX

- Simple labeling environments with fixed data
- Familiar Windows interface
- Helpful label design wizards

## LABELVIEW

- Medium complexity labeling environments
- Simple database connections
- Customizable print forms
- Intuitive interface

## CODESOFT

- High complexity labeling environments
- RFID support
- Complex database integration
- Regulatory compliance, such as:
  - Unique Device Identification (UDI)
  - Globally Harmonized System of Classification and Labeling of Chemicals (GHS)

## Enterprise Label Management

- Maximum complexity labeling environments
- CODESOFT + SENTINEL integrates with any ERP system to completely automate label printing
- CODESOFT + LABEL ARCHIVE is for companies that need to track every aspect of the label design process and apply user permissions
- TEKLYNX CENTRAL is a centralized, browser-based label management solution for the whole enterprise



## About TEKLYNX

TEKLYNX International is the world's leading barcode and RFID labeling software developer and solutions provider. An industry innovator for over 30 years, TEKLYNX helps companies operate smoothly and efficiently by implementing labeling solutions that streamline operations while staying ahead of industry-specific compliance and emerging regulations. TEKLYNX is world-renowned for its customer service; offering flexible purchase options, unparalleled service and support, and a comprehensive product offering that grows with companies over time. With operations in the United States, Europe, Japan, China and Singapore, more than 620,000 companies in over 120 countries look to TEKLYNX integrated software solutions for their standard of success.

### Connect With Us



### Contact Us

Phone: 414-837-4800  
Email: [weblynx@teklynx.com](mailto:weblynx@teklynx.com)

409 E Silver Spring Drive  
Suite U12  
Whitefish Bay, WI, 53217  
United States

### Visit Our Website



[www.teklynx.com](http://www.teklynx.com)