

REA VERIFIER

QUALITY CONTROL DEVICES
FOR MATRIX- AND BARCODES

REA TransWin 32

Quality Control of optical Codes –
Get it on one view



REA TransWIN 32 – Visualize Code evaluations



Verification of optical codes according to international standards is part of delivery contracts and print process control.

REA Verifiers are world wide in use for bar code and Matrix code verifications. REA TransWin32 is the central control software to acquire, visualize, store and print verification reports. REA TransWin32 can be used on a typical MS Windows operated standard PC.

Several REA Verifiers can be connected by standard network cables to a company network and be controlled by one or several REA TransWin32 installations. REA TransWin32 can be installed with one license on several PCs. Reports are sent by a standard TCP/IP protocol from the verifier to the PC.

The user friendly visualization allows seeing the result, symbology and coding content immediately. Results are available for immediate use in incoming, outgoing goods control and print process control.



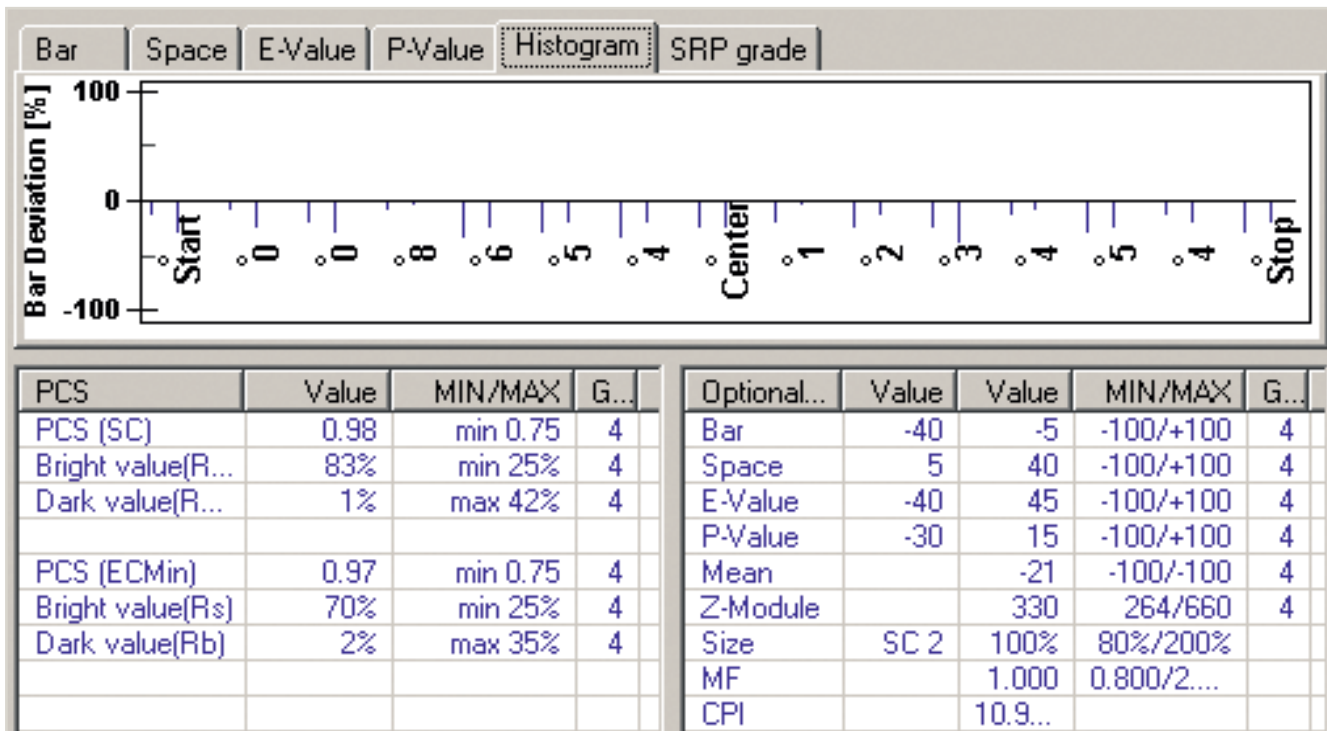
REA ScanCheck 3



REA MLV-2D

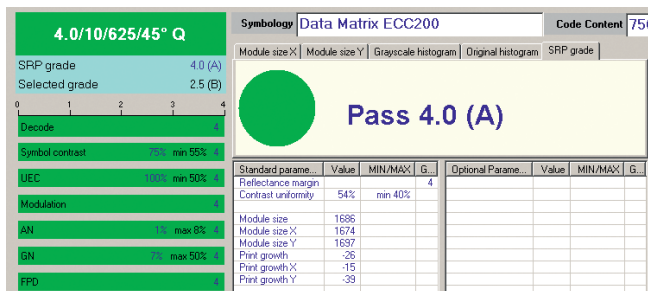
Verification reports are sent by TCP/IP to TransWin32. The report view shows symbology, code content and the final result. This allows immediate reaction in production, incoming and outgoing goods control.

Each error gets an own error message to simplify analysis and error removal. Corresponding results are also highlighted in red Comments, user addresses and verifier device details can be added to each verification report.

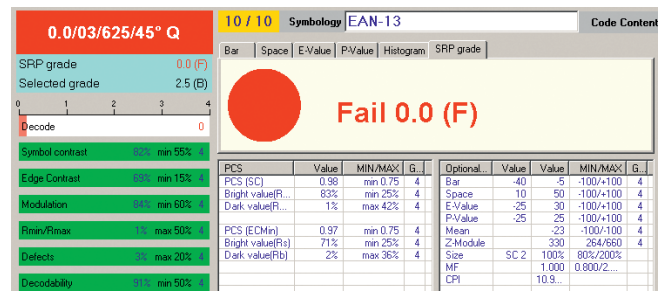


Bar width deviation histogram shows the distribution of deviations in one view.

This allows to correct quickly printer adjustments.



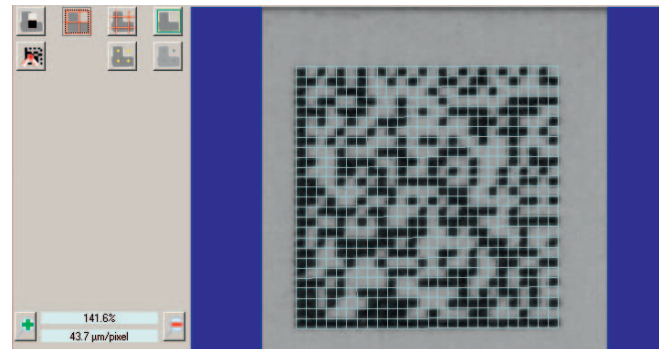
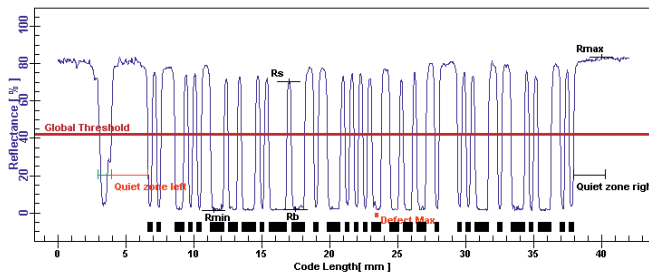
Traffic light to indicate pass or fail results. More details are available in graphical and tabular forms.



Red text and graphics indicates errors.

Centrally the reflectance profile of the measured bar code is shown. This provides additional essential information. Detail can be enlarged. Specific distances and sizes can be measured directly in the reflectance profile. In case of Matrix (2D) Code evaluations the code image replaces the reflectance profile

In case a customer or supplier installs a demonstration version of TransWin32 then the original full reports can be seen. Alternatively reports can be saved in PDF format by using PDF writer software.



Picture: Reflectance profile of a barcode

Picture: Evaluation of a 2D code

Detailed evaluation	Error	User comment
Error:		
01) Defect value too large, actual: 30%, max: 20%		
02) Decodability value too low, actual: 35%, min: 50%		
03) Bar too wide, actual: 165%, max: 100%		
04) Space too narrow, actual: -195%, min: -100%		
05) E-Value too low, actual: -170%, min: -100%		
06) E-Value too high, actual: 160%, max: 100%		
07) P-Value too low, actual: -110%, min: -100%		
08) P-Value too large, actual: 140%, max: 100%		

Picture: Error and Warning list.



REA PC-Scan/LD3

Features:

- show evaluation results for barcodes according to ISO/IEC 15416 or ANSI X3.182
- show evaluation results of matrix codes according to ISO/IEC 15415 or ISO/IEC TR 29158 / AIM DPM-1-2006 Specifications
- visualize optional parameters for print process control
- complete remote configuration and control of REA verifiers models Check ER, ScanCheck3, PC-Scan/LD3, MLV-2D
- visualize GS1 Codes evaluations according to GS1 General Specifications
- GS1 Report printout
- visualize verification of GS1-128 data structures
- optional parameters like bar deviations can be added as graded parameter to the evaluation
- auto discrimination of standard symbologies
- averaging of results of 2 to 10 scans. Not decoded tries can be, by setup choice, included or excluded.
- enhanced quiet zone verification including border view
- verification of wide to narrow bar width ratio
- password protection for settings
- profile management for complete setup setting with options to clone settings
- multi language interface
- comments and references can be added to reports
- automatic save and print of reports with using an order number as file name prefix
- data export for data bases or statistical use
- reliable, flexible and fast communication by using the TCP/IP protocol between verifier and PC. The License is valid to install software on several PCs

REA TransWin32

technical data:

- 32 bit program for MS® WINDOWS® 2000, XP, VISTA®, Windows 7 (32 and 64 bit) with .net Framework 2.0 or later
- fully functional with REA Verifiers REA PC-Scan/LD3, REA ScanCheck 3, REA MLV-2D and REA Check ER. Receive, view save and print reports. Setup and remote control of Verifiers
- compatibility mode with restricted functionality for the retired REA Verifier products
- visualization of standard symbology verification:
 - EAN-13
 - UPC-A
 - UPC-E with ADD-ON
 - EAN-8
 - 2/5 Interleaved with/without check digit
 - ITF-14
 - Frachtpost
 - Code 39 with/without check digit
 - PZN-Code
 - Code 32
 - Code 128
 - GS1-128 with data structure check
 - GS1 DataBar
- visualization of optional symbology verification:
 - 2/5 3 Bars
 - 2/5 5 Bars
 - 2/5 IATA
 - 2/5 Baggage
 - 2/5 DHL Express
 - Code39 Full ASCII
 - Code93
 - MSI
 - Plessey
 - Code 128 UPU
 - Code 39 UPU
 - Code 39 HIBC
 - Code 128 HIBC
 - Codabar Monarch (18)
 - LAETUS Pharmacode
 - LAETUS Mini Pharma Code

- visualization of matrix code symbologies by using the REA MLV-2D Verifier:
 - Data Matrix
 - GS1 DataMatrix
 - Direct marked DataMatrix codes (DPM)
 - QR-Code, MicroQR-Code.

PC hardware requirements:

- CPU: 1,5 GHz Clock frequency, 1 GB RAM Memory, in case of the the REA MLV-2D a Intel Quadcore i5 or similar CPU is recommended
- Hard disk: 1 GB at minimum
- Display: Color Display: 1280 x 1024 Pixel
- Optical drive: 1 CD-ROM, DVD or Blu-ray drive
- Interface: 1 Ethernet-Port (for older device either USB or serial Port)
1 USB 1.1 port for REA ScanCheck 3 required
1 serial interface for REA PC-Scan/LD required or
1 USB to serial converter cable

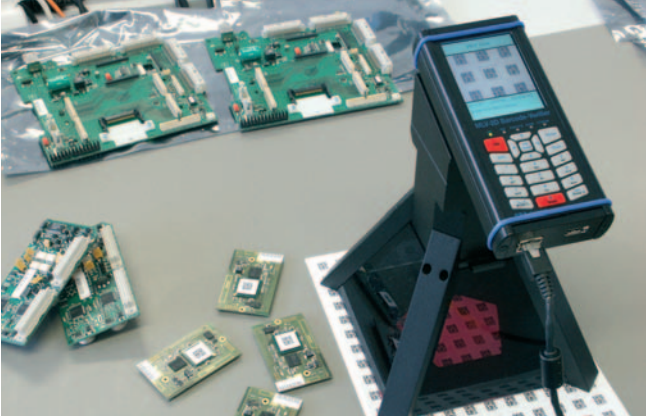
System requirements software:

- Operating system: Microsoft® Windows XP®
Windows VISTA®
Windows 7®
.NET Framework, version 2.0
- Internet-Browser: min. Microsoft®
Internet Explorer IE 6.0 or
Mozilla Firefox 3.6

REA VERIFIER



Verifying DataMatrix codes on mailing bags



Verifying DataMatrix codes on label sheets



Measuring barcodes on print sample sheets



Quality inspection of barcodes



Verifying barcodes on metal barrels



Verifying barcodes in shipping and receiving



Flexible on-site barcode verification



Flexible measurement of barcodes

REA VERIFIER



REA Elektronik GmbH

Teichwiesenstrasse 1

64367 Muehlthal

Germany

T: +49 (0)6154 638-0

F: +49 (0)6154 638-195

E: info@rea-verifier.com

www.rea-verifier.com